

TerraCast[®]

PRODUCTS

CUSTOM BASE CAPABILITIES
CATALOG

SOLVING THE AESTHETIC PROBLEMS



Innovation With **Resin Based** Commercial Outdoor Products

WWW.TERRACASTPRODUCTS.COM



TerraCast[®]

As an American owned and operated company, we use environmentally friendly materials and practices. One of our environmentally friendly materials is the unique resin-blend that we use to create our eco-friendly products. As the leading manufacturer and vendor of roto-molded planters and light pole bases, we are committed to the health and well being of the economy, the planet, and the future.

With the use of resin, we offer products that are up to 75% lighter than traditional planters and light pole bases, virtually indestructible, maintenance-free and cost-effective.

We have the perfect solutions for you no matter how big or small your project is. Our custom options will fit the needs of your business to a "T".


Visit www.terraCastproducts.com for our full line of products.

Providing Industry Solutions

Starting with our roto-molded resin planters, we have been solving the maintenance and aesthetic concerns since 1969. Whether it's cities, municipalities, businesses, contractors, architects, designers, educational facilities, or neighborhood associations, each industry has its struggles in dealing with outdoor products. Many of them spend thousands of dollars every year on maintenance and replacing their planters, light poles, and bases made in traditional materials. Our mission is to provide solutions to each industry as much as we can with our durable resin products. Our custom capabilities solve the challenges of matching existing designs to preserve the aesthetics of the installation while overcoming the maintenance problems.

5G Small Cell Towers

Technology has arrived at the cross road of shorter, more visible poles and the aesthetics demanded by city specifications. The leader of resin made decorative bases for the lighting industry provides seamless integration into municipal designs demanded by your customers. You have enough planning and integration to focus on, maintenance free, code abiding designs shouldn't have to be one of them. Our proactive team will help you in designing and protecting the most vulnerable part of the tower - the Base.

- 
- 5 Materials
 - 6 Berkley Base
 - 7 Bermuda Base
 - 8 Boardwalk Base
 - 9 DSL Transition Collar
 - 10 Dallas / Delaware Base
 - 11 Golden Beach Base
 - 12 Gillette / Madison Base
 - 14 Maple Leaf Base
 - 15 Pinnacle / Washington Base
 - 16 Decorative Light Pole Bases
 - 18 Fluted Sleeve



TERRACAST® BASES ARE MADE WITH UV STABILIZED LINEAR LOW DENSITY POLYETHYLENE (LLDPE) RESIN MATERIAL. OUR LLDPE RESIN IS SPECIALLY FORMULATED, DESIGNED AND MANUFACTURED TO WITHSTAND YEARS IN THE SUN AND HARSH CLIMATES. THE UV STABILIZED, COLOR THROUGH MATERIAL PROVIDES A LIFETIME OF VIBRANT COLORS. WE HAVE DEVELOPED A RECYCLED BLACK COLOR THAT IS MADE PRIMARILY FROM POST-CONSUMER RECYCLED MATERIAL TO FURTHER OUR COMMITMENT TO REDUCE WASTE. OUR RESIN PRODUCTS ARE 100% RECYCLABLE AND SHOULD NEVER END UP IN THE LANDFILL.

MATERIAL BENEFITS

TerraCast® Bases Benefits

- Low Initial Cost
- Lower Installation Cost
- Rust Resistant
- Corrosion Resistant
- Crack Resistant
- Chip Resistant
- Vandal Resistant
- Impact Resistant
- Salt Resistant
- Lightweight
- No Maintenance Required
- No Scrap Value
- Color Through Material
- Never Needs Painting
- Resists Pet Markings/Stains
- Defends Against Extreme Weather and Temperatures

PROBLEMS WITH OTHER MATERIALS

The base of a light pole is prone to damage and often neglected. The thin protective layer of powder coat in traditional industry standard bases chips after a few years of installation and leads to rust and corrosion. Aluminum bases get stolen to be sold for scrap metal, leaving the rest of the pole exposed to moisture. Replacing these parts with the same material will only repeat the same problem.

TerraCast® offers a cost-effective solution in a durable resin blend to protect the most vulnerable location at the base of a light pole. The TerraCast® resin material is resistant against chipping, rusting, or corroding, solving the problems altogether. Made with UV stabilized and color-through material, gouges and scratches appear less visible with TerraCast® resin material. The lightweight design of our resin bases helps minimize shipping costs as well as installation costs.



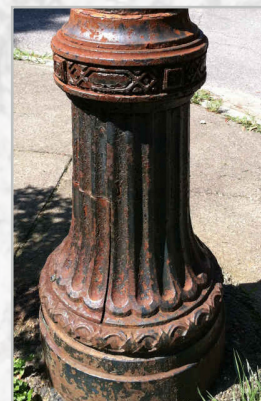
TerraCast® Base



Fiberglass Base



Concrete Base



Steel Base



Aluminum Base

BERKLEY BASE



Year after year the village spent time and money painting and maintaining their cast aluminum bases. Then they found TerraCast®. We were able to replicate their base, and gone are the days of the aluminum parts.

BERMUDA BASE



In one of South Florida's premier master planned communities, many of the tapered light poles and decorative bases made from aluminum had met their economic life. Rather than replacing all of the bases with aluminum, and waiting for the problem to happen again, TerraCast® was contacted by a local property management company to see if we could match their bases and eradicate the problem with resin. So we did. Found on the right, you'll see a picture of the weathered aluminum base and a TerraCast® replica in resin material.

BEFORE



AFTER

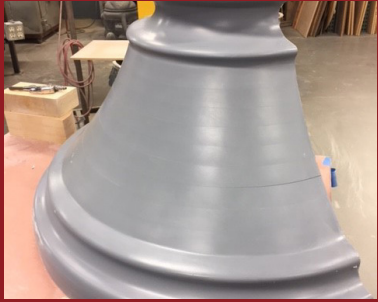
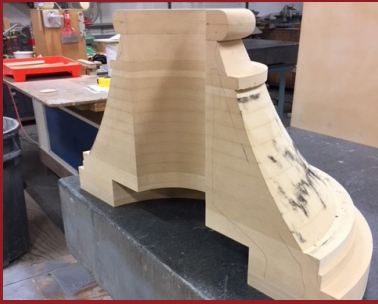


BOARDWALK BASE

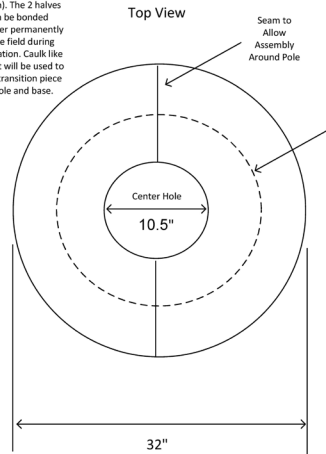


This is a concept that was presented to us by an industry leader in small cell tower technology. We were only provided with a drawing, and TerraCast® made their vision come to life. The first few pictures showcase the wooden plug, which was created from scratch, then shaped by hand on a lathe. From there, a plastisol part was made using the plug as a guide. This faux replica is a model of the exact finished part and the actual “plug” was used to cast the mold for future parts.

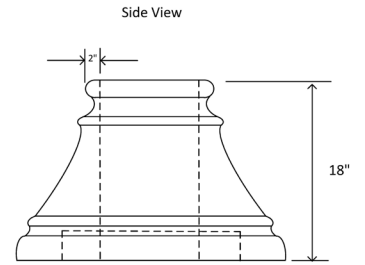
WOODEN PLUG



Mechanism to Align 2 Halves Together - Required Such as Pegs/Holes or Internal Dove Joints (not shown). The 2 halves can be bonded together permanently in the field during installation. Caulk like sealant will be used to bond transition piece to pole and base.



Area Carved Out to Allow Space for Pole Base and Bolts (18 inches diameter x 3 inches height)



BEFORE



AFTER



DSL TRANSITION COLLAR



While many Small Cell or 5G installations are done on standard street light poles or made to match existing streetscapes, there are often times that a site is erected and existing bolts expose mounting hardware. In those cases where bolts become unsightly, a simple concealment cover is necessary. The nearly indestructible TerraCast DSL Collar was made to cover anchor plates and provide a decorative transition between pole and radio cabinet.

ITEM #	STYLE	BASE OD	POLE DIA	HT	MATERIAL
TC-DSL6	CLAM SHELL	20"	UP TO 17.5"	6"	LLDPE RESIN

DALLAS BASE



One of the key contractors in the cell tower industry had such success with TerraCast® Bases that they relied on us to create this beautiful Washington Bell design base for one of their key communities. A bold, UV resistant base that will never chip or ever need painting, the Dallas base adorns the streets of this community that welcomed several new 5G cell towers.

DELAWARE BASE



A major Department of Transportation turned to TerraCast® Products to recreate a decorative base that they felt they were overpaying for and spending too much to maintain. They asked us to develop a decorative base that could withstand the sun, salt, heat and freezes common to their region. They further asked that we develop a base that would never chip, fade or ever need painting. Our durable resin base was a perfect solution for the DOT.

GOLDEN BEACH BASE



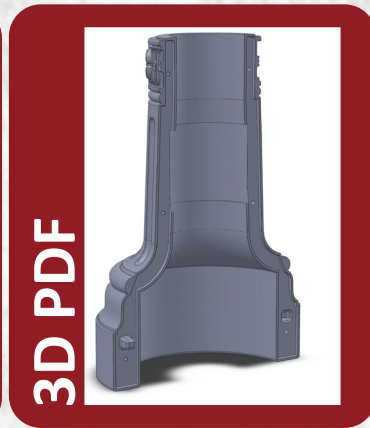
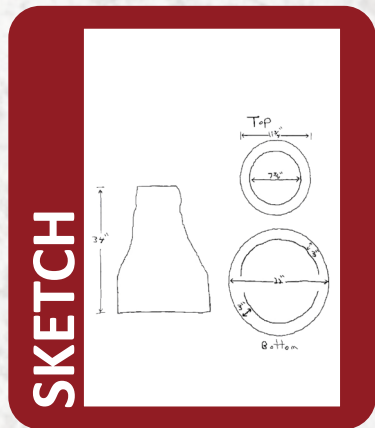
One of South Florida's coastal cities was struggling to maintain its corroding lamp posts and bridge top posts. They turned to TerraCast® for a solution that would utilize the Terracast® Products molding process to replicate the city's bridge top post in maintenance-free resin material. This resin base can come as a small base or as a mini-pole. The city has been enjoying the maintenance-free mini-poles ever since.

GILLETTE BASE



A city in the west was struggling with adverse conditions affecting their roadway bases. As you can see on the next page, we were given a hand drawn sketch and a few pictures of an actual, dilapidated part. From that, we were able to create a wooden plug, and then cast aluminum around it to make a female mold. We also produced a 3D PDF for the customer to preview before we began to finalize the mold.

The new resin Gillette base is UV stabilized to minimize fading. This base will not peel, rust, or ever need painting. Unlike metal bases, TerraCast® resin bases do not have a resale value through recyclers, mitigating the threat of stolen bases. This preserves the beauty of the installation and protects the city from liability against exposed wires.



MADISON BASE



The use of road salts and deicing chemicals is inevitable in a northern city's snowy winter season. The city has been struggling to maintain its rusting and corroding light poles due to its harsh climates. TerraCast® replicated their bases in resin material to put an end to their maintenance concerns. These bases come both in drop over and clam shell style.

MAPLE LEAF BASE



An east coast city challenged TerraCast® Products to solve their issue of fading, chipping and rusting light pole bases. They were tired of the expense and labor routinely required to maintain their failing bases. TerraCast® was able to provide them an exact replica of their aluminum bases with a new base that would never need to be painted or to be maintained for aesthetic purposes. By producing their bases in our Linear Low Density Polyethylene, TerraCast® created a UV Stabilized, color through decorative base that would never be subject to chipping, cracking, or needing to be touched up. They could safely and easily pressure wash any grime or salt build up on the bases when they maintained their sidewalks. This municipality was also able to contribute to minimizing its carbon footprint by utilizing a product and material that utilizes more than 90% recycled material and is 100% recyclable.

PINNACLE BASE

This classic and impressive base was developed under specific plans to create a sharp design that combines the latest in technological material with this classic look. Designed to customize two of the four walls for any municipality, it is the perfect solution when branding is required. As with all of our resin bases, it is impervious to the sun, salt and rain. This base never requires painting as it will never chip or show any significant fading.



WASHINGTON BASE

This is a decorative replica of the popular Washington style bell-shape base. This particular model comes as a drop over style with an access door. Municipalities are beginning to find a real advantage in using our materials because the parts that we produce will not rust, pit, corrode, or rot. There is no more maintenance!



DECORATIVE LIGHT POLE BASES

Our decorative resin bases affix easily to the existing poles to protect the most vulnerable spots at the bottom of a light pole. Though not designed to reverse the effects of corrosion, our bases are excellent at eliminating additional entry points and greatly enhance curb appeal. Our resin bases improve safety and reduce the risk of theft because they have no scrap value, unlike metal parts.

A great concealment solution to the small cells, our custom capability solves most concerns for small cell aesthetics and allow cities to preserve their historic designs. The maintenance-free element of our material is a great value-add to lower maintenance costs. See our ever-growing line of decorative bases below.



AVAILABLE STYLES & SIZES

NAME	ITEM #	STYLE	BASE OD	POLE DIA	HT
ARGENTA	TC-ARG52	CLAM SHELL	30"	UP TO 18"	52"
ATHENS	TC-ATH38	CLAM SHELL	22.25"	UP TO 10.25"	37.25"
ATLANTA	TC-ATL28	CLAM SHELL	17.50"	UP TO 7.25"	27.50"
	TC-ATL38	CLAM SHELL	22.25"	UP TO 10.25"	37.25"
BERKLEY	TC-BRK24	CLAM SHELL	13.50"	UP TO 6"	24"
	TC-BRK46	CLAM SHELL	20.75"	UP TO 7.75"	46"
	TC-BRK4216	CLAM SHELL	24"	UP TO 10.5"	42"
BERMUDA	TC-BER24	CLAM SHELL	12"	3" / 4"	24"
BOARDWALK	TC-BOR18	CLAM SHELL	32"	10.5"	18"
DALLAS	TC-DAL39	CLAM SHELL	36"	UP TO 18"	39"
DELAWARE	TC-DEL16	CLAM SHELL	15"	UP TO 5"	16"
	TC-DEL18	CLAM SHELL	19"	UP TO 6.75"	18"
	TC-DEL28	CLAM SHELL	26.50"	UP TO 10"	27.75"
DENVER COLLAR	TC-DEN24	CLAM SHELL	21.50"	UP TO 13.5"	6.5"
DETROIT	TC-DET9	CLAM SHELL	26.75"	UP TO 20"	9"
DSL COLLAR	TC-DSL6	CLAM SHELL	20"	UP TO 17.5"	6"
GILLETTE	TC-GIL34	CLAM SHELL	24"	6" / 7.75"	34"
GOLDEN BEACH	TC-GOL22	DROP OVER	12"	3" / 4"	22"
KEEGO HARBOR	TC-KHB43	CLAM SHELL	25"	UP TO 6"	43.25"
MADISON	TC-MAD31	DROP OVER	17"	UP TO 8"	30.5"
	TC-MAD36	DROP OVER	19"	UP TO 10"	36"
	TC-MAD31-6.5	CLAM SHELL	19.25"	UP TO 6.5"	31.25"
MAPLE LEAF	TC-MAP40	CLAM SHELL	21"	UP TO 7"	40"
	TC-MAP45	CLAM SHELL	30"	UP TO 10.5"	44.5"
MENIFEE	TC-MEN45	CLAM SHELL	21.75"	UP TO 4.5"	45.75"
MIRAMAR	TC-MIR40	CLAM SHELL	16.50"	4"	40"
NEWTON	TC-NEW36	CLAM SHELL	16"	UP TO 4.30"	36"
NOLA	TC-NOL12	CLAM SHELL	28"	UP TO 20.5"	12"
PINNACLE	TC-PIN25	CLAM SHELL	25"	UP TO 13"	25"
SARASOTA	TC-SAR20	CLAM SHELL	16"	UP TO 11"	20"
TAMPA	TC-TAM51	CLAM SHELL	46"	UP TO 22"	51"
WASHINGTON	TC-WAS18	DROP OVER	19"	UP TO 5"	18"
WINTER PARK	TC-WIN35	CLAM SHELL	20"	UP TO 9.25"	35"

FLUTED SLEEVE



Many cities and municipalities have struggled with accepting straight and smooth monopoles to be erected in their cities to provide their residents with 5G service. Due to the lack of decorative poles having the structural integrity and wind load necessary, many communities have had to settle for these eyesores. The TerraCast® Fluted Sleeve has provided a solution to this problem. Whether it's a new or an existing installation, the sleeve will change a plain smooth pole to a decorative, fluted design without compromising the structure or wind load. The material is made of a color-thru, high-grade polyethylene resin that is UV stabilized to withstand fading, chipping, or peeling. The decorative sleeve will protect the base pole from direct sunlight, which will dramatically extend the life of the pole's surface.

- Neatly fits over TerraCast® or industry decorative bases to conceal the monopole
- Allows your team to cut access points in the field or at your warehouse
- Stack as many sleeves as necessary to conceal the monopole
- Cut to exact size needed
- Lightweight for easy on-site installations

ITEM #	OVERALL HT	POLE DIA	WEIGHT
TC-SLE10	94.5"	10"	33 LBS

SUSTAINABLE BRAND

At TerraCast®, we deeply care about our planet and we are committed to environmentally friendly practices every step of the way from start to finish. We are proud to say that our products can be manufactured using up to 100% recycled content and our manufacturing process is virtually waste free. Our products are 100% recyclable and should never end up in a landfill.

FREIGHT POLICY

All shipments are F.O.B. factory and freight collect.

Please see our complete freight policy online at:

<https://www.terracastproducts.com/shipping-return-policy/>

LIMITED WARRANTY

TerraCast® Products warrants its products to be free from defects and workmanship. Please read our complete limited warranty online at:

<https://www.terracastproducts.com/warranties/>

TerraCast® Products is not responsible for typographical errors. Measurements in this catalog are rounded to the nearest quarter inch and may not be exact due to manufacturing variances. TerraCast® Products reserves the right to alter and change specifications. Please check our latest catalog online and call customer service to confirm critical measurements.

INNOVATIVE. ENDURING. STRONG.

TerraCast[®]

PRODUCTS

Scan the QR code to view the latest version on our website!



o: 305.895.9525

f: 305.895.7879

info@terraCastproducts.com

4400 NW 19th Avenue, Unit K
Pompano Beach, FL 33064

WWW.TERRACASTPRODUCTS.COM